

KAWATANA RIVER FLOOD HAZARD MAP

PREPARING FOR DISASTERS

1 Know what to take with you when disaster strikes

- Check ☒ what you will take with you in a disaster evacuation scenario
- Have a disaster supplies kit ready
- Flash light
 - Portable radio
 - Battery charger
 - Water
 - Emergency food (canned food, etc.)
 - Disposable dishes, plastic wraps
 - ID, copies of important documents such as bank passbooks
 - Tissues
 - Knife, rope
 - Packing tape, markers
 - Extra clothes (outfits, underwear)
 - Towels
 - First aid (household medicine), health & medication record book
 - Baby items (diapers, formula)
 - Vacuum bags, plastic bags
 - Soap, toothbrushes, etc.
 - Sanitary items, disposable diapers for the elderly, etc.
- Keep what you will bring under 10 Kg

2 Check the safe evacuation routes

Study Know where the shelters in your area are on a map and know how to get there from your home.

The nearest shelter

Time required to get to the shelter

On foot Minutes

Plan the route to the nearest shelter in advance.

Avoid inudside-prone areas

3 Participate in emergency evacuation drills in your neighborhood

Check the disaster prevention plan for your town

Actively participate in local disaster prevention drills

Check for dirt and fallen leaves that might clog the gutter.

Make it a habit to make sure the gutter in front of your house is clear and that there are no loose items lying around

Inspect and check for necessary maintenance around your house

The map shows the areas where flooding is expected, how deep flooding is expected, and where the shelters are in each area in case of extreme torrential rainfall and when the Kawatana River overflows.

Past flood damage

Main flooding in the past

| | |
|----------------|-------------------------------|
| September 1948 | 408.7mm (24-hour rainfall) |
| August 1956 | 279.5mm (24-hour rainfall) |
| July 1967 | 237.0mm (24-hour rainfall) |
| July 1990 | 375.0mm (24-hour rainfall) |

The Kawatana River has experienced flooding on numerous occasions in the past during typhoon and torrential rains due to the narrow width of the river.

Damage

In July 1990, there was a lot of damage and destruction of houses due to flooding caused by seasonal heavy rains.



Around Nakadon, Yumuta-go (July 1990)



Around Man'en Bridge, Takebeta-go (July 1990)

Damage in Hasami-cho

- 65 cases of flooding above floor level
- 225 cases of flooding below floor level
- 4 houses half or completely destroyed
- 26 houses partially destroyed

Emergency shelters during a disaster

EITHER EVACUATION ROUTE IS OK

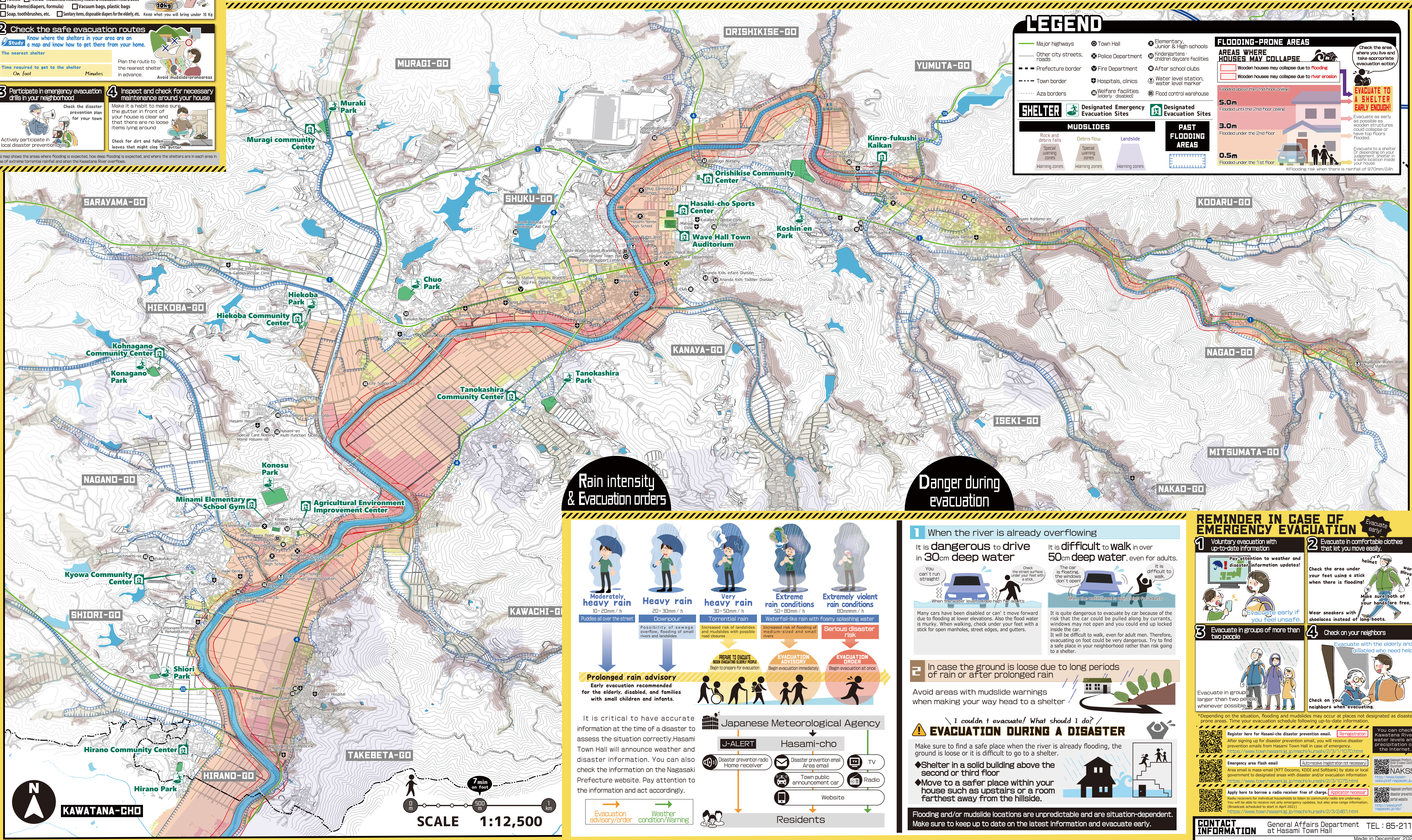
DESIGNATED EVACUATION SITES
DESIGNATED EMERGENCY EVACUATION SITES

You may evacuate to any shelter on the map during a disaster. The number of people a shelter can accommodate is approximately as follows.

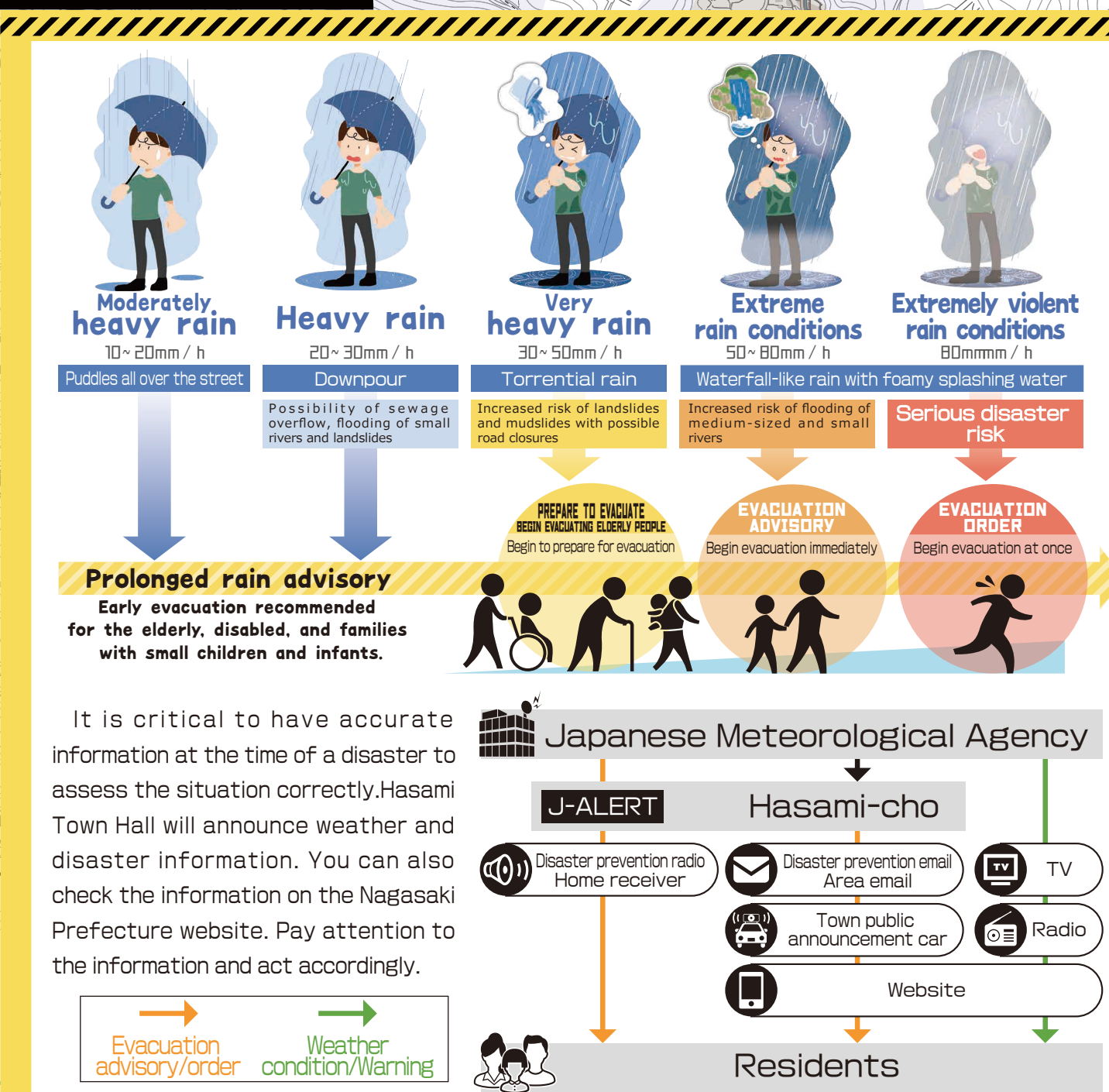
| Area | Designated Evacuation Sites | Shelter capacity | Phone numbers | Designated Emergency Evacuation Sites | Shelter capacity |
|--|---|------------------|-------------------------------|---|------------------|
| Nagao-go Kodaru-go Yumuta-go Iseki-go | Kinrofukushi-kaikan (Labor-Welfare Hall) | 190 | 85-2214 | Koshin'en Park Higashi Elementary School (Second floor and above when the first floor is flooded) | 570 80 |
| Kanaya-go Orishikise-go Shuku-go | Orishikise Shuraku Community Center Hasami-cho Gym Hasami-cho Cultural Center | 90 430 210 | 85-2292 85-5992 85-2034 | Chuo Park | 500 |
| Hiekoba-go | Hiekoba-go Community Center | 60 | 85-5042 | Hiekoba Park | 70 |

| Area | Designated Evacuation Sites | Shelter capacity | Phone numbers | Designated Emergency Evacuation Sites | Shelter capacity |
|--|---|------------------|--------------------|---|------------------|
| Tanokashira-go | Tanokashira-go Community Center | 30 | 85-3673 | Tanokashira Park | 350 |
| Kawachi-go Takebeta-go Otsunagano-go | Minami Elementary School Gym Agricultural Environment Improvement Center | 280 230 | 85-2414 85-6428 | Konosu Park Minami Elementary School | 990 200 |
| Kyowa-go | Kyowa-go Community Center | 50 | 85-3799 | - | - |
| Shiori-go Hirano-go | Hirano-go Community Center | 20 | - | Shiori Park Hirano Park | 110 80 |

*You can spend a night in the car in the car marked areas. Make sure to evacuate early enough when evacuating by car.



Rain intensity & Evacuation orders



Danger during evacuation



REMINDER IN CASE OF EMERGENCY EVACUATION

